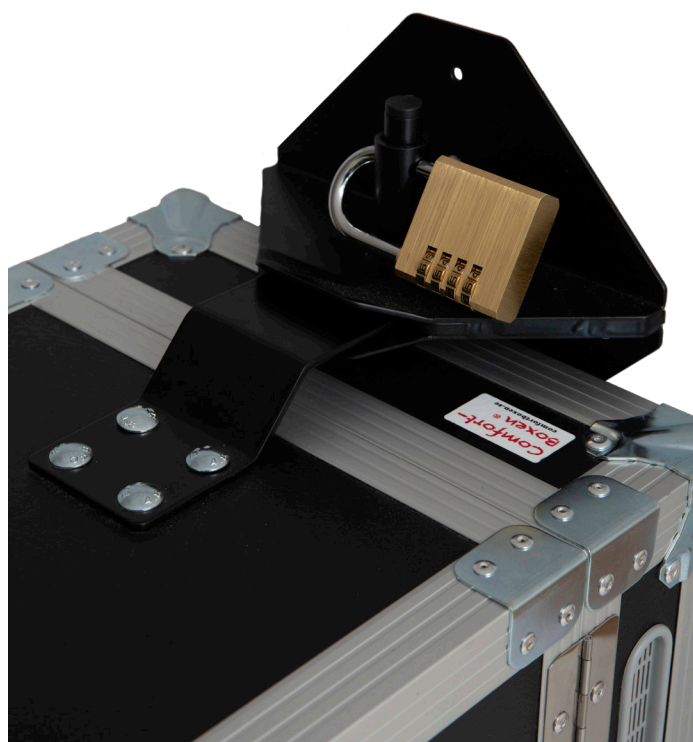


### Installation of Universal locking

1. Select a suitable place to store and charge your Comfortboxen unit. Proximity to electrical outlets and the wall material are crucial aspects to consider.
2. Lock the two parts of Universal locking together and place these in the middle on top of the Comfortboxen unit. Then place the unit at the selected place against a wall.
3. Centre the fitting in the middle of the top of the box, the wall bracket should then be aligned to the wall.
4. Mark and drill the four holes, unlock and separate the parts, screw the bracket with the supplied bolts, washer and nut on the inside.
5. Lock the parts back together and place the trolley and the locking unit against the wall again.
6. You have now got the exact position for the wall unit and should now make a mark in the visible hole at the top of the bracket. Lock apart again and complete the installation by fixing suitable (depending on the wall construction) screws through the three holes on the bottom of the bracket.
7. The assembly is now complete.



## CONTACT US

### Address

Vitmossevägen 1,  
S-554 75 Jönköping

### Phone

+46 (0)35 12 76 31

### E-mail

info@comfortboxen.se  
order@comfortboxen.se

### Website

[www.comfortboxen.se/en/](http://www.comfortboxen.se/en/)